

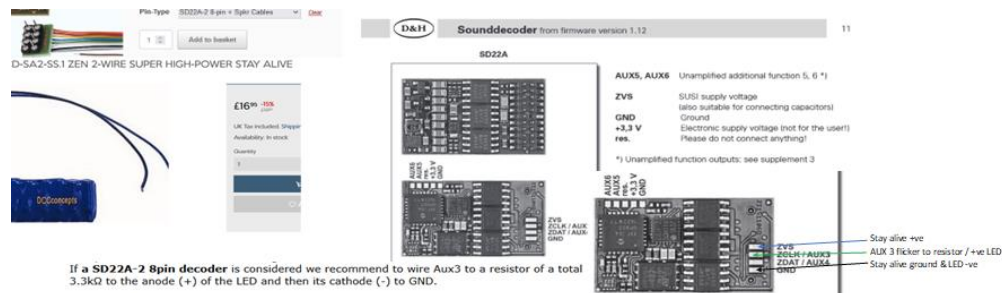
Locomansounds D&H Hush Hush Rebuilt Fitting Demo

D&H Locomansounds decoder fitting with stay alive and coal flickering led light.

The first, is the W1 rebuilt, 10000 with corridor tender

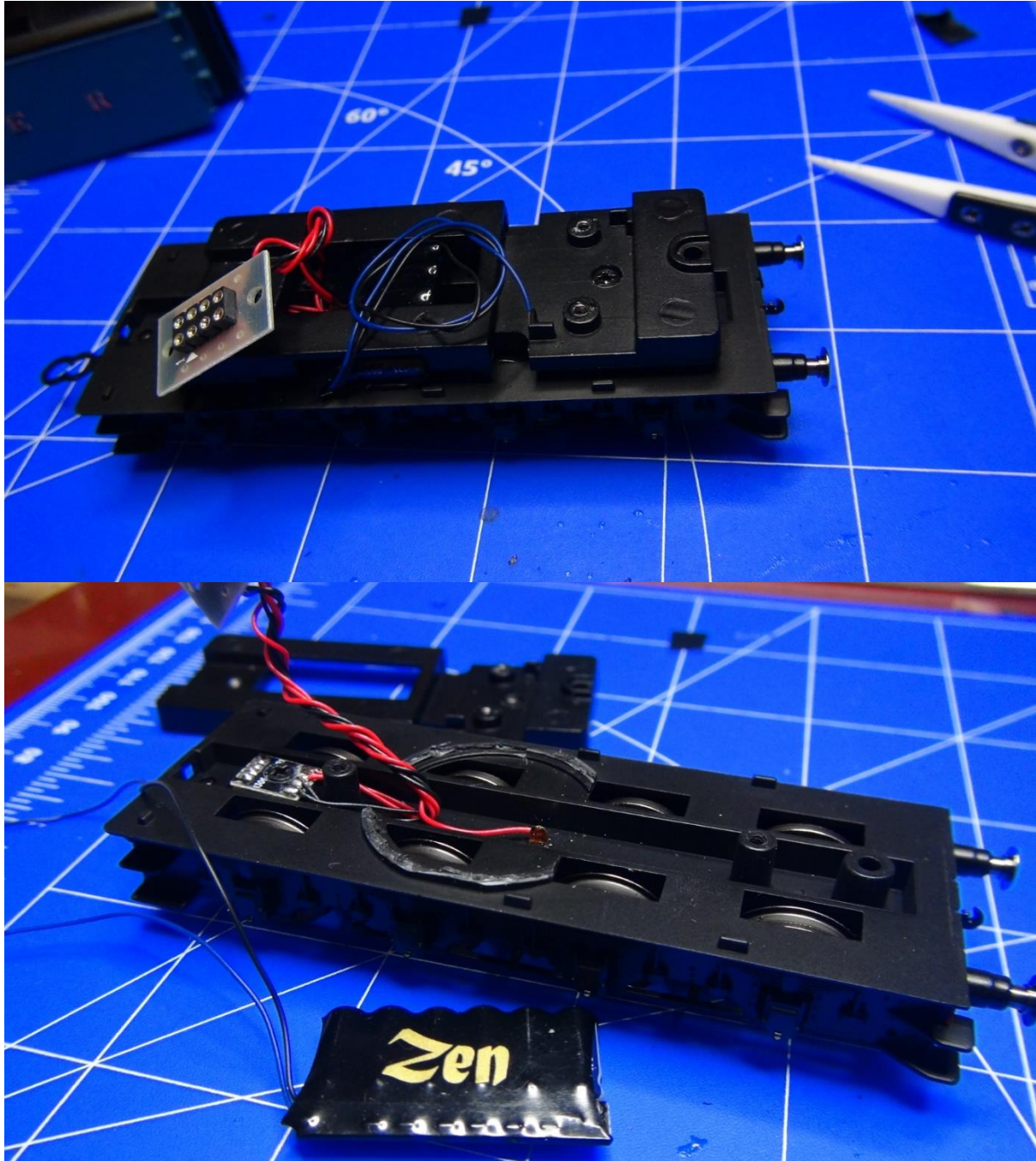
On this occasion, I managed to keep the original weight in the tender, however to get a large speaker to fit there was a fair amount of cutting and carving.

Here is the kit:



Parts removed from the tender.

The stay alive can fit under the weight. Start by clipping away the standard speaker housing.

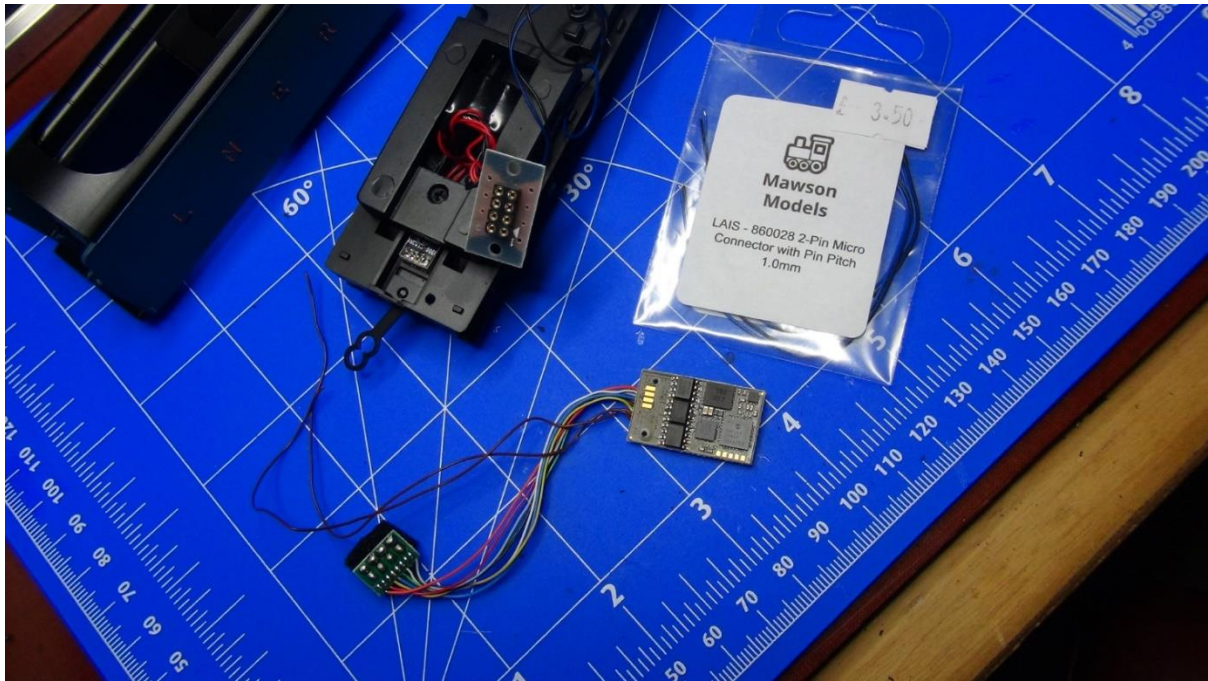


Stay alive fitted under the weight. Zen label underneath gave the best fit.

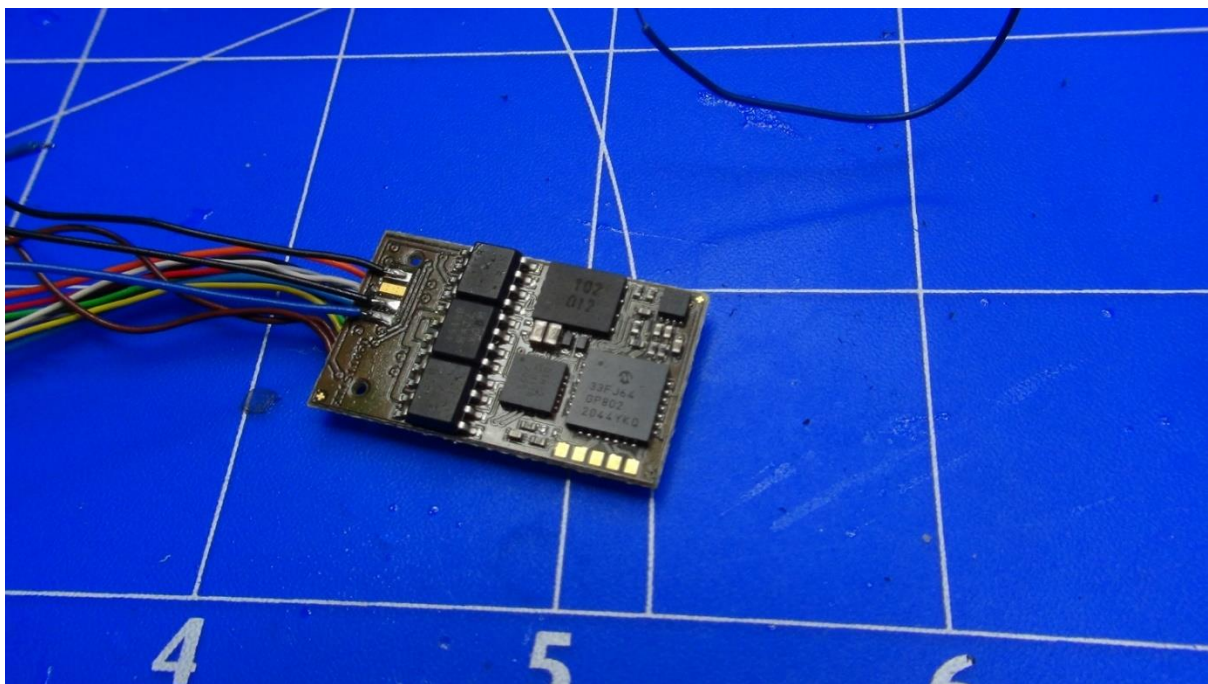
Now for the cutting and carving to remove most of the coal pan. I have used a combination of a short razor saw and scalpel, which seems to be the easiest method for me, but it does take a while. A couple of views:



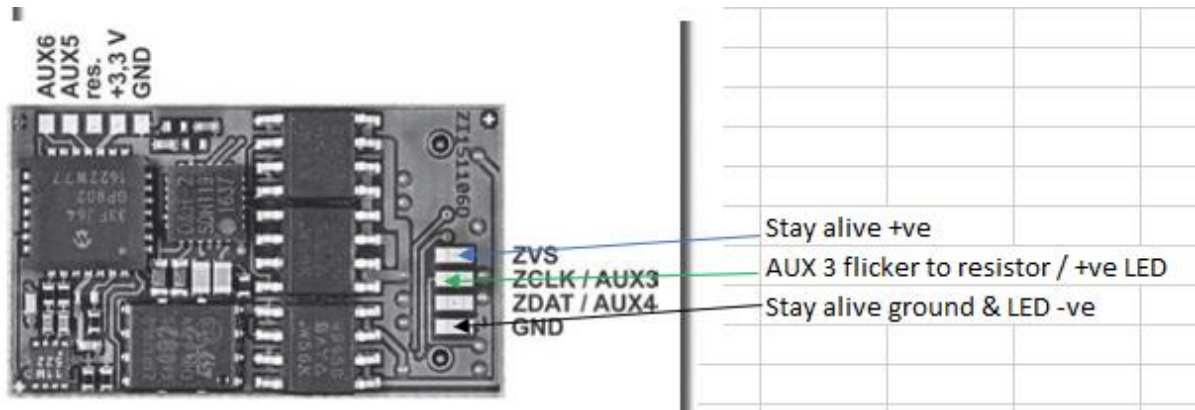
Now for the sound decoder, and preparation for an extra 2 pin micro-connector to the loco, for the firebox LED.



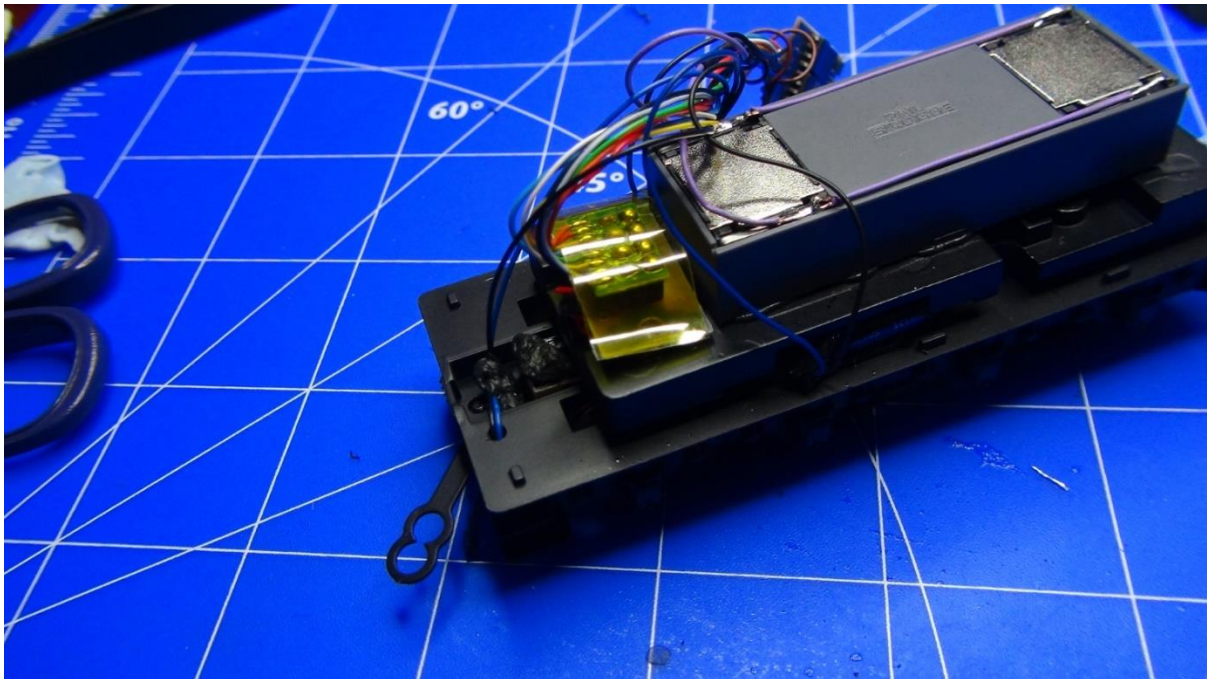
Wires soldered to the decoder for the stay alive and firebox flicker.



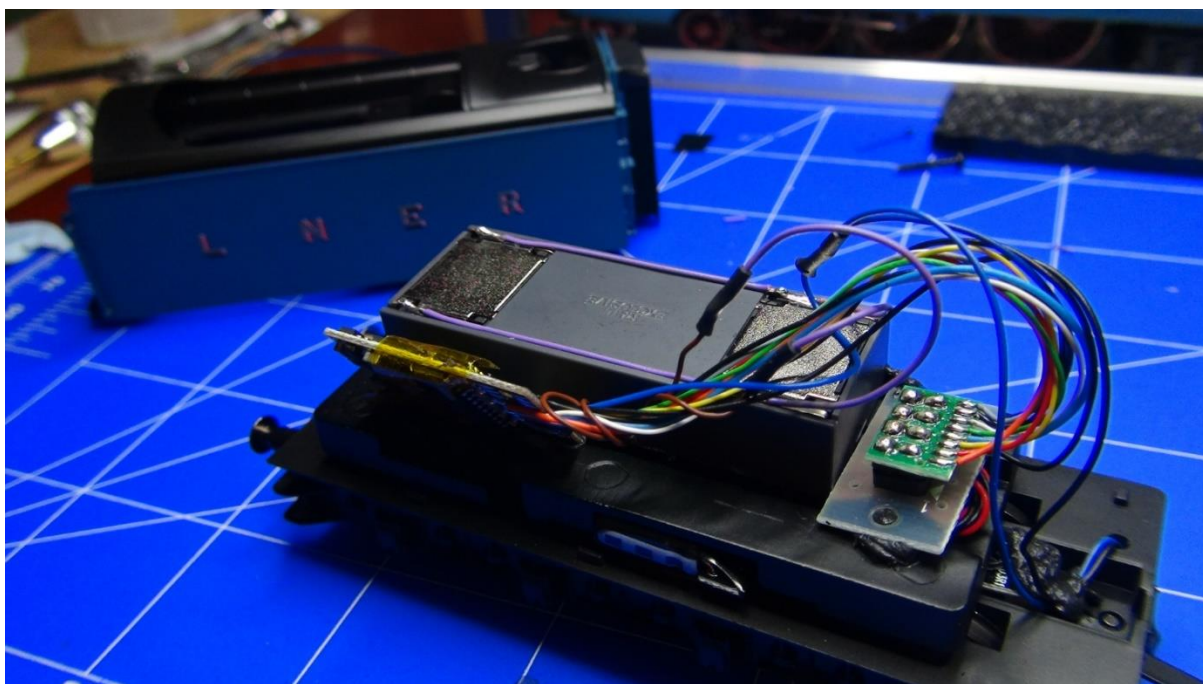
Here are the connections - see D & H manual - SD22A decoder.



Insulation needed before loading the decoder.



The speaker was moved to one side of the weight (fixed with black tack). The decoder, first small pieces of 'hot' tape were added, where black tack used to fix the edges of the decoder to the weight. The decoder is set at an angle to reduce the height, just enough, so then it fits into the upper corner of the tender body.



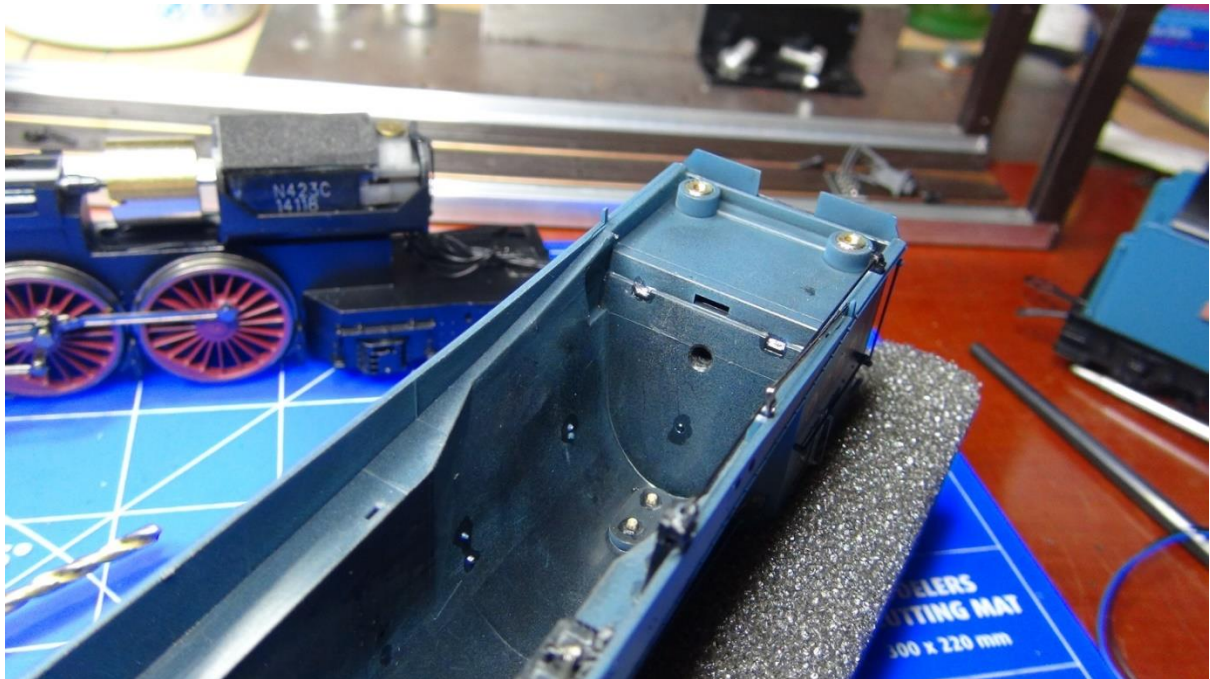
Tender body back on.

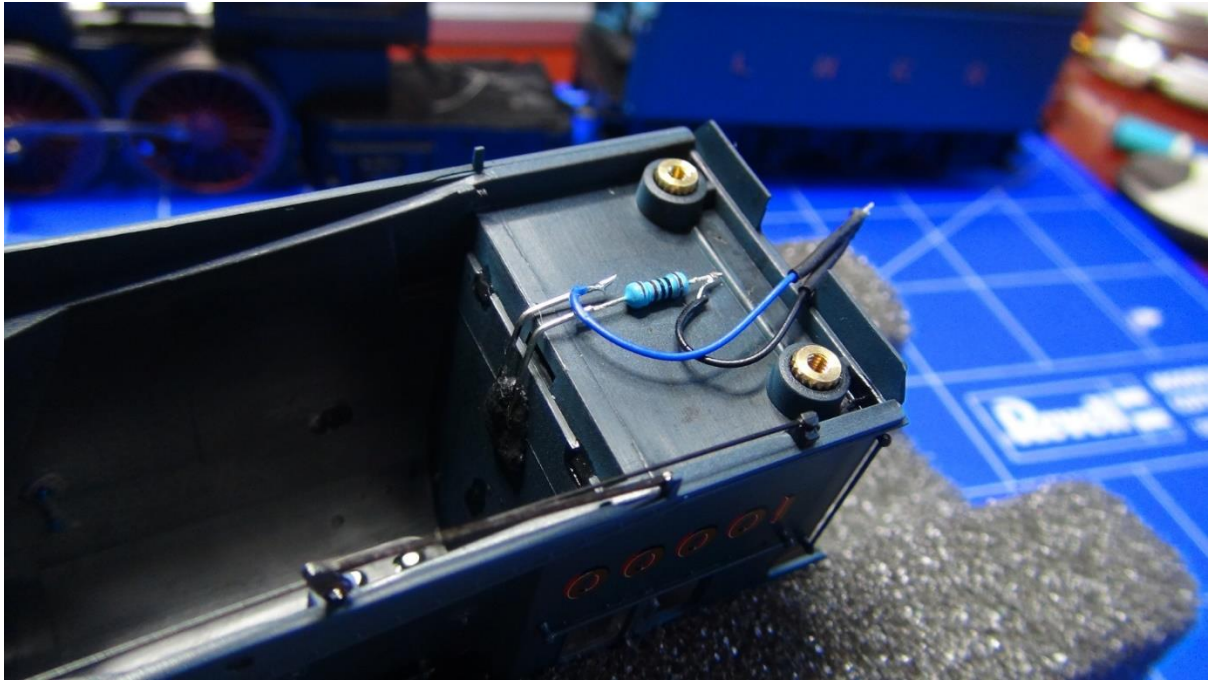


Original coal load fitted.

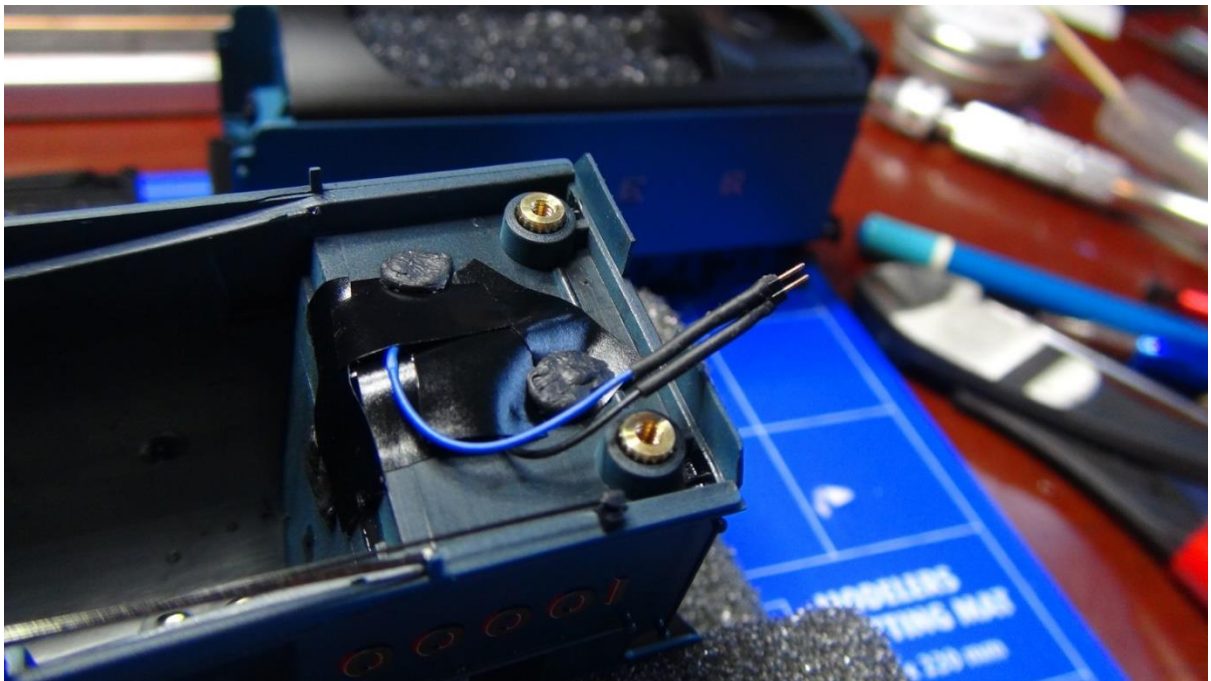


Now for the locomotive firebox flicker. **There is very little room between the end of the motor and the back plate of the firebox.** So, the LED had to be pushed through more than is usual (needing a larger hole than typically 3mm), and the connections and resistor were moved to the shallow space underneath the cab.





Followed by insulation.



Ready to go.



It's a 'big' sound, with lots of functions provided by Locoman. F10 is the coal shovelling, coupled with firebox flicker.

A note of warning. The rod between chassis and body is not in the instructions for loco body removal! That has to be disconnected from the rear driving wheel before lifting the body off.